



Marquee Manager & VideoSERVER

Product Family Brochure

SeQent Ltd.
4500 Blakie Road, Suite 137
London, ON N6L 1G5
Canada
+1.519.652.0401
Sales@SeQent.com



SeQent.com



COMPANY OVERVIEW

SeQent is a leading industrial automation software provider and early pioneer in the Industrial Internet of Things (IIoT) with over twenty years of experience and thousands of installations worldwide. Our Alarm Notification Software, Andon-Visual Display Management, Industrial Automated Messaging, and Industrial Wi-Fi SMS Messaging solutions provide a bridge between industrial automation systems and communication devices.

Our solutions send key information in real-time to Motorola Solutions two-way radios, smartphones, PA speakers, pagers, LED/LCD displays, tablets, Zebra Workforce Connect clients, and more.

PRODUCTS

FirstPAGE



Industrial Automated Messaging

SeQent's FirstPAGE (FP) product family provides a high-volume automated messaging platform that publishes text and voice data in real-time to a wide range of communication devices.

TeamCALL



Industrial Automated Dispatch/Scheduling

SeQent's TeamCALL (TC) product family provides real-time automated team member dispatch in a batting order rotation, team member assignment, location, and scheduling.

Marquee Manager



Andon-Visual Display Management

SeQent's Marquee Manager product family monitors manufacturing environments and sends real-time, automated messages to visual and audible devices, including LED/LCD displays, mobile devices, stack lights and sounder alarms.

FirstPAGE Alarm Manager



Alarm Notification Software

SeQent's FirstPAGE Alarm Manager (FPAM) product family manages the entire life cycle of alarms and events in real-time with automatic alarm escalation, repeat counts, and message delays.

Wi-Fi Messenger



Industrial Wi-Fi SMS Messaging Platform

SeQent's Wi-Fi Messenger (WFM) product family provides a real-time autonomous communications network built off of an internal Wi-Fi network that eliminates the requirement of a SIM card, carrier contract, and carrier coverage dependency.

VideoSERVER



Digital Signage Content and Audio Control

SeQent's VideoSERVER (VS) product family provides a Digital Signage Content and Audio Control solution that enables full customization of display templates for fixed and mobile devices.

Manufacturing Alarms & Events

Equipment Alarms

Systems

Enterprise Maintenance Production Facilities Life Safety



Mobile / Wi-Fi / Motorola WAVE

MOTO TRBO Radios

SIP ATA SIP PBX TTS

ZEBRA TECHNOLOGIES Workforce Connect

Tablets / Mobile ANDON

LED / LCD Displays, Stack Lights, & Sound Devices

Industries:

- Automotive
- Consumer Packaged Goods
- Water & Waste Treatment
- Heavy Equipment
- Oil & Gas
- Pulp & Paper
- Semiconductor
- Life Sciences
- Metal & Mining
- Manufacturing

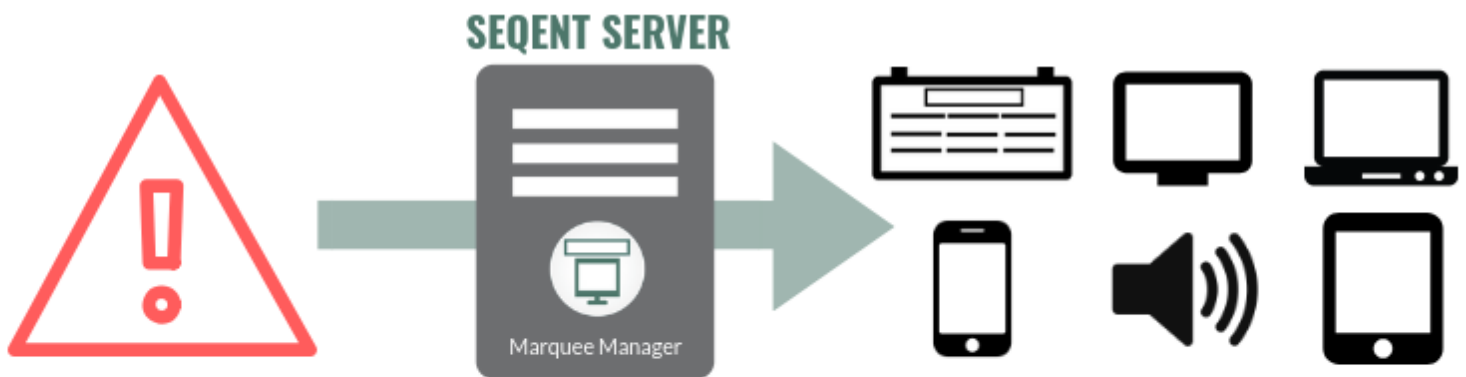
Marquee Manager

Andon—Visual Display Management



SeQent's Marquee Manager product family monitors manufacturing environments and sends real-time, automated messages (Alarms, Events, KPI's, OEE) to visual and audible devices including LED/LCD displays, smartphones, tablets, stack lights and sounder alarms. As an integral part of any lean initiative, Andon boards provide visibility into the activity on the plant floor but need to be driven by a robust, easy-to-use software solution. Our Andon – Visual Display Management product family is the only multi-vendor marquee solution, supporting the majority of boards, including legacy displays.

With efficient installation and implementation, Marquee Manager provides a user-friendly Andon – Visual Display Management software solution that supports the collection of Andon alerts from various automation systems and sources. Utilizing Marquee Manager's vast integration capabilities, custom implementations are possible with its easy-to-use message management system that offers prioritization and queueing. Data is easily accessible due to the full suite of flexible administration tools, all accessible remotely, and the wide range of device connectivity options.



ALARM INPUTS

- Building Management Systems
- Enterprise Asset Management Systems
- Equipment and Database Alarms
- HMI / SCADA Solutions
- Life Safety Systems
- Quality Systems

ALARM OUTPUTS

- ANDON - Industrial Digital Signage
- LED / LCD Displays
- Mobile Computers
- Smartphones
- Sounder Alarms
- Tablets

Marquee Manager Features

- Delivers real-time information to most active matrix Andon boards, including legacy marquee displays & LED/LCD displays
- Display KPI data with real-time embedded data
- Easy-to-use message management system including prioritization and queuing of Andon alerts
- Trigger events when a data value or bit reaches a certain value
- Forward HMI/SCADA event messages
- Easily reconfigurable by in-house staff for flexible or agile manufacturing environments with developing Andon requirements

Marquee Manager

The Marquee Manager product family includes various components that complete the Andon—Visual Display Management Solution.

Marquee Manager Server

Provides a scalable, enterprise-wide software application that is the core of SeQent’s LED / LCD display management system. The Marquee Manager Server ensures that messages destined for an Andon board have all the necessary control characters needed to instruct the board on how to optimally display the information. Additionally, Marquee Manager Server continually refreshes Andon messages to ensure that all posted content is accurate.

Marquee Manager Administrator

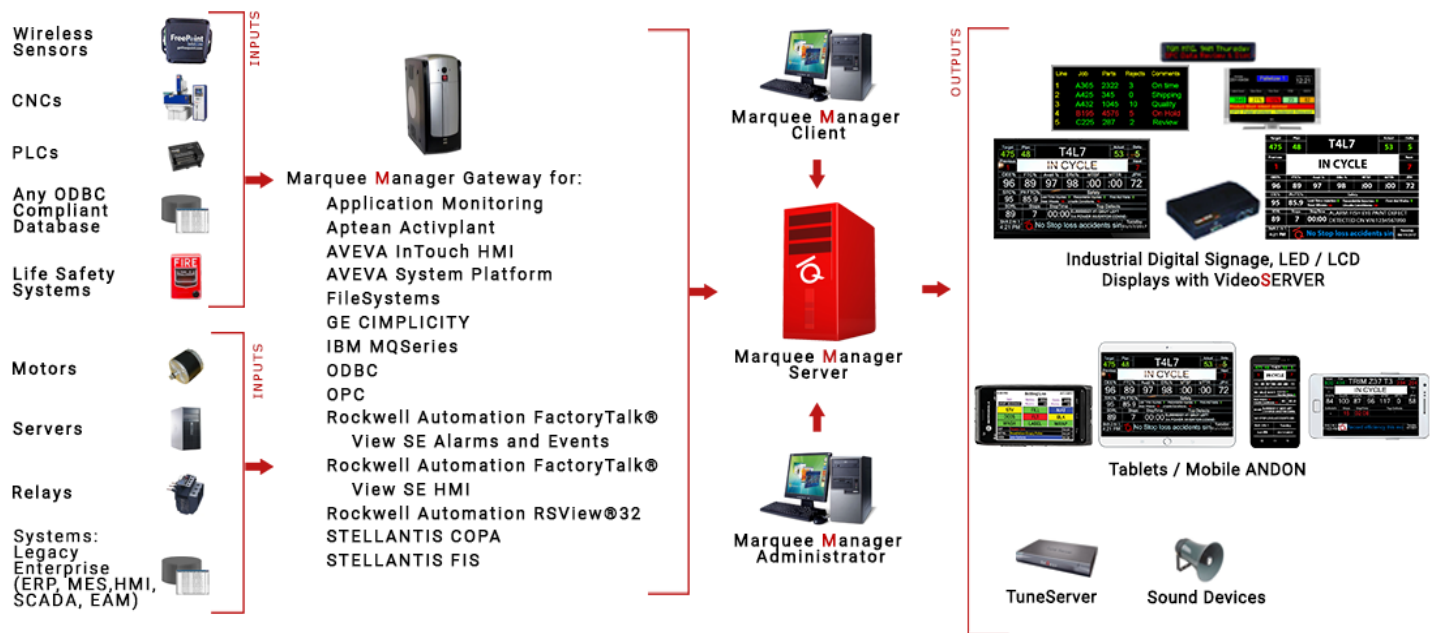
Allows users to create and maintain one or more Marquee Manager Server Andon display configurations from any workstation.

Marquee Manager Gateways

Provides a bridge between most industry standard Andon inputs and the Marquee Manager Server.

Marquee Manager Client

Provides a simple, easy-to-use interface that pushes manual messages to LED display / Andon boards via Marquee Manager Server.



VideoSERVER

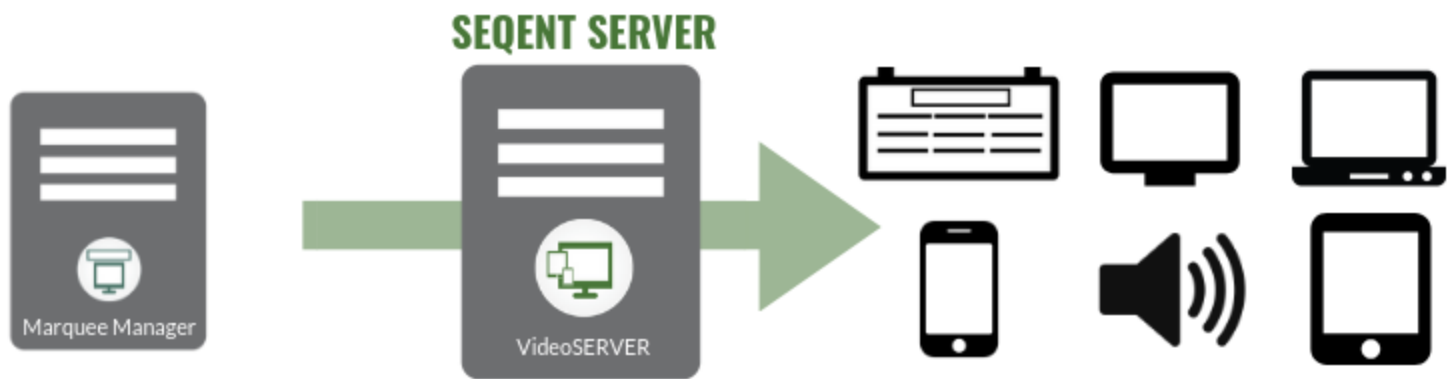


Digital Signage Content and Audio Control

SeQent's VideoSERVER (VS) product family provides a Digital Signage Content and Audio Control software solution that enables full customization of display templates for fixed and mobile devices.

With real-time data collection from various systems and prioritization, VideoSERVER provides the ability to customize any display surface with text, graphics, animations, and sounds while creating a standard interface across all display types. Offered as a hardware appliance form or a software license, VideoSERVER allows you to connect standard LCD monitors, video projectors and Digital Signage to any TCP/IP network.

Starting with Marquee Manager Server, VideoSERVER extends the Andon—Visual Display Management product line to enable full control and customization of display templates for fixed and mobile devices.



ALARM INPUT

- Marquee Manager Server

ALARM OUTPUT

- ANDON - Industrial Digital Signage
- LED / LCD Displays
- Mobile Computers
- Smartphones
- Sounder Alarms
- Tablets

VideoSERVER Features

- Support for traditional Andon LED displays and LCD panels
- Template switching
- Audio alerts and queuing
- Object queuing
- Support for up to 16 million colors
- Collaging of data from multiple sources
- Sophisticated display objects

VideoSERVER

Starting with Marquee Manager Server, VideoSERVER extends the Andon—Visual Display Management product line to enable full control and customization of display templates for fixed and mobile devices.

VideoSERVER Emulator and Web Emulator

Enables video display control for LCD as well as traditional LED pixel based Andon displays. The Web Emulator allows easy web-based rendering of Andon displays for smartphones, tablets and other HTML5 web browsers.

VideoSERVER Appliance

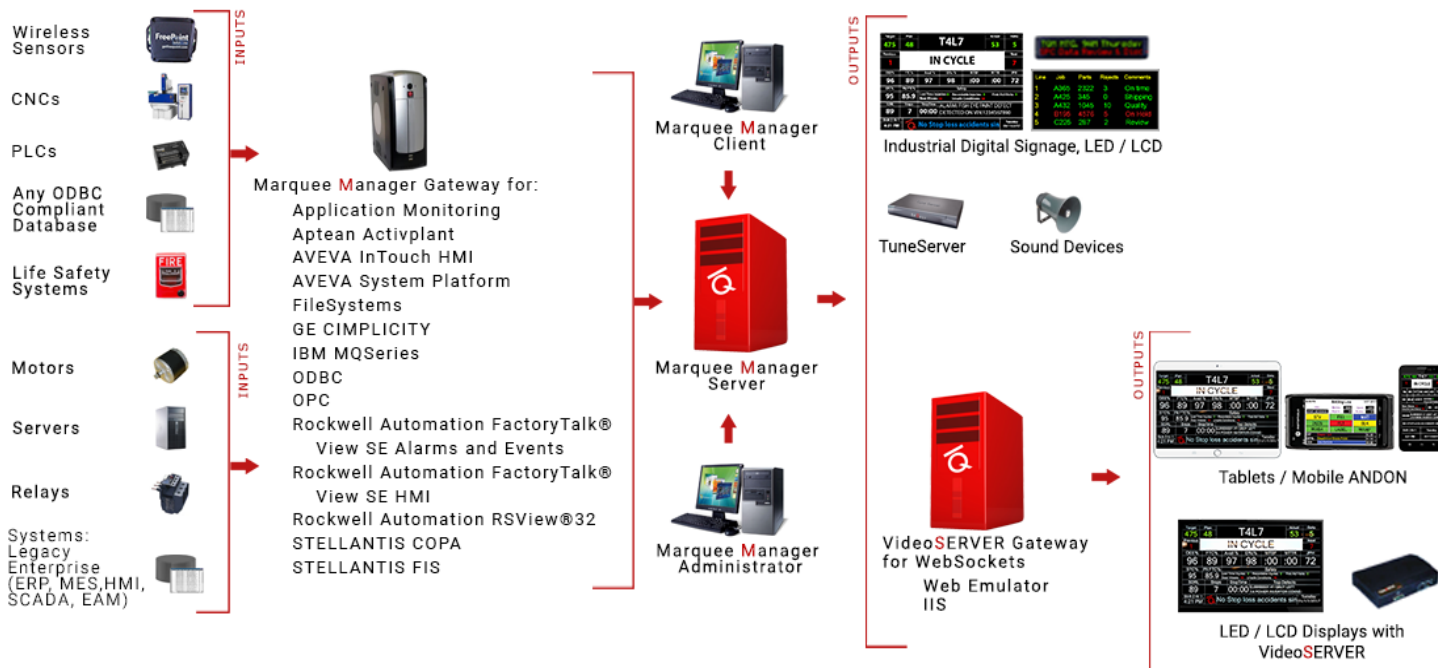
Designed to provide years of run time with little to no maintenance. The Appliance is based on a hardware platform containing no moving parts and utilizes an embedded Windows platform.

VideoSERVER Configuration Editor

Provides an easy-to-use layout tool that allows the end-user to create and maintain Andon templates for one or more VideoSERVERS.

VideoSERVER Gateway for WebSockets

Extends the capabilities of VideoSERVER Web Emulator by providing a communication layer and allows multiplexing of Marquee Manager displays facilitating unlimited browser-based viewing in real-time.



“We met SeQent at the 2017 Automation Fair by Rockwell Automation in Houston. With the assistance from our Rockwell Automation authorized distributor Border States Electric and our Motorola Solutions dealer Electronic Engineering, a formal introduction was made and we successfully installed a turnkey solution that built a software bridge between our FactoryTalk View SE HMI environment and our Motorola Capacity Plus two-way radio system. This solution has transformed our plant floor communication process and SeQent has demonstrated a willingness to take Voice of Customer (VoC) requests and make the appropriate changes. For instance, we met with them at the 2018 Rockwell TechED event in San Diego and within a couple months, our enhancement request was delivered and the system is functioning as promised and expected”

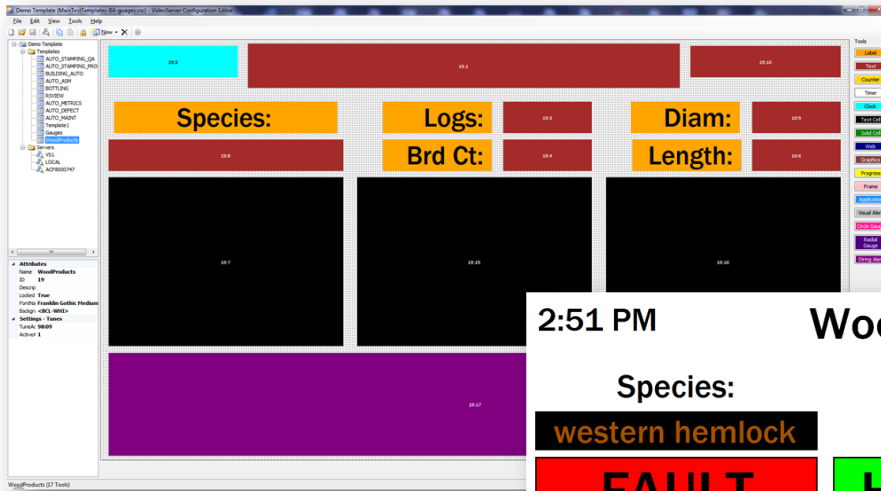
Valley Queen

Mark Lee
Automation Lead Technician
Valley Queen Cheese

VideoSERVER Sample Templates

Wood Products – Sample Production Display

Configuration Editor Design

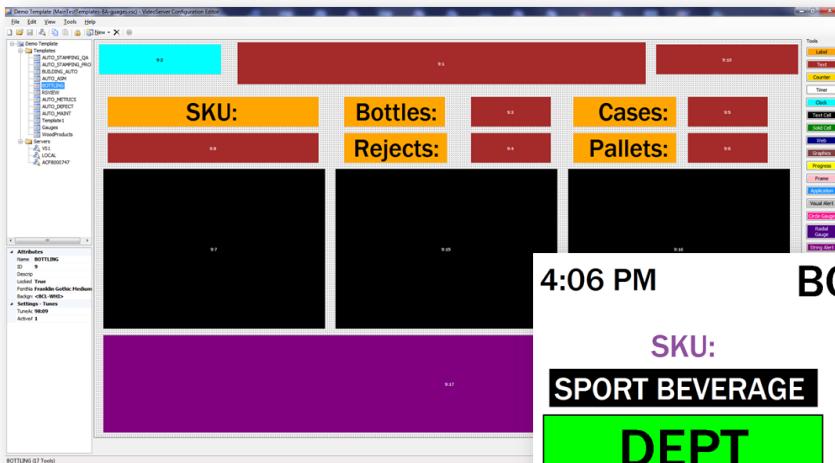


Actual Display Rendering

2:51 PM	Wood Products		11/02/2020
Species:	Logs: 299	Diam: 18.0	
western hemlock	Brd Ct: 30.0	Length: 19.0	
FAULT	HEADRIG	TRIMMER	
STARVED	GANG SAW	SORTSTAC	
EDGER	CHIPnSAW	HIGHTEMP	
Debarker	High Temperature Zone 2 Warning	00:10	
Chip N Saw	High Temperature Zone 2 Warning	00:10	
Bucking	High Temperature Zone 2 Warning	00:10	

Beverage Facility – Sample Production Display

Configuration Editor Design

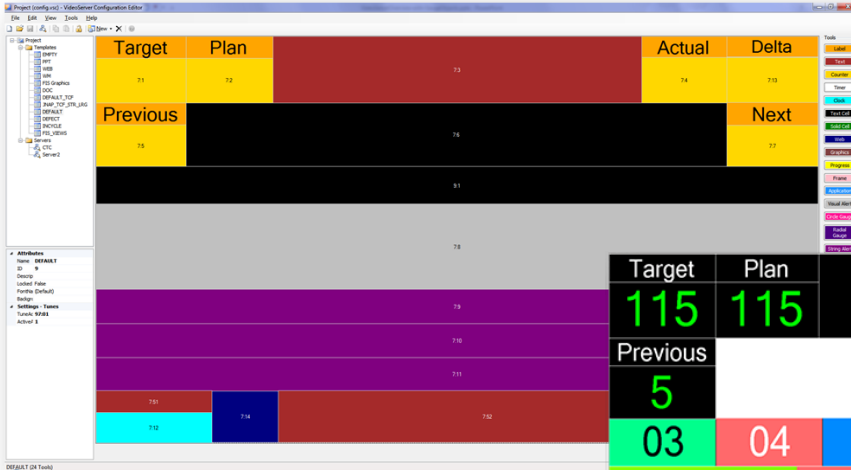


Actual Display Rendering

4:06 PM	BOTTLING LINE 5		14/08/2020
SKU:	Bottles: 3800	Cases: 160	
SPORT BEVERAGE	Rejects: 5	Pallets: 3	
DEPT	QC	CASE	
DECS	CAP	PAL	
FLT	LABEL	WRAP	
FILL	Product Low Fill	00:08	
WASH	Washer Low Temp	05:16	

Automotive Facility – Sample Team Station Display

Configuration Editor Design

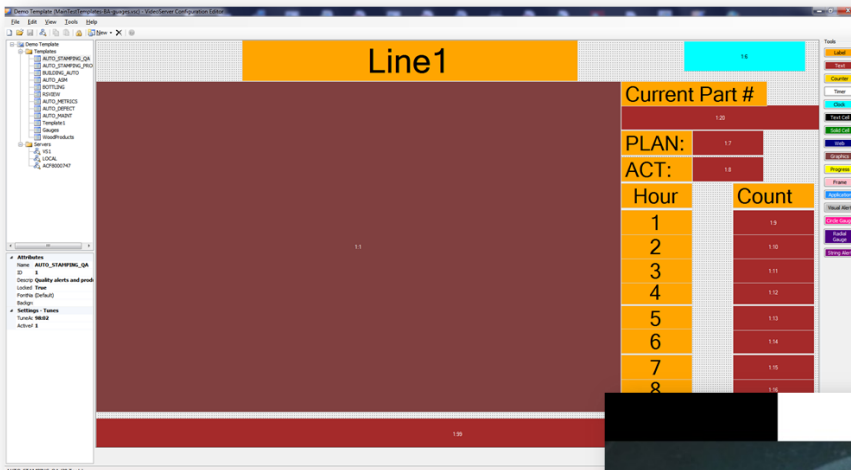


Actual Display Rendering

Target	Plan	PNLMFIN 1				Actual	Delta
115	115					88	27
Previous	IN CYCLE				Next		
5					5		
03	04	05	06	07	08		
08	04		06				
37:35	41:04	36:34					
S03	S03 BLOCKED BY S04					41:30	
Shift 1 Hr 10							Tuesday
4:46 PM							06/01/2020

Stamping Facility – Sample Production Display

Configuration Editor Design



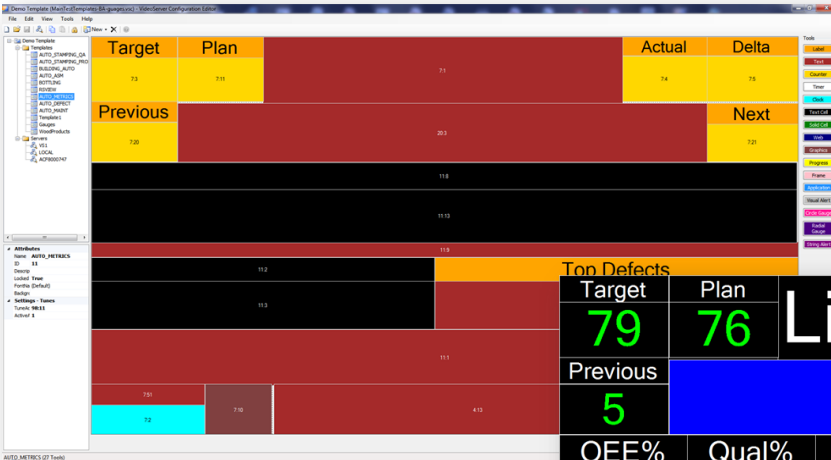
Actual Display Rendering

Line1		3:07 PM
Current Part #		PART_100001
PLAN:	420	
ACT:	404	
Hour	Count	
1	300	
2	400	
3	340	
4	300	
5	481	
6	0	
7	0	
8	0	

Line1: 1611 pcs Line2: 8581 pcs Line3: 22380 pcs

Automotive Facility – Sample Metrics Display

Configuration Editor Design

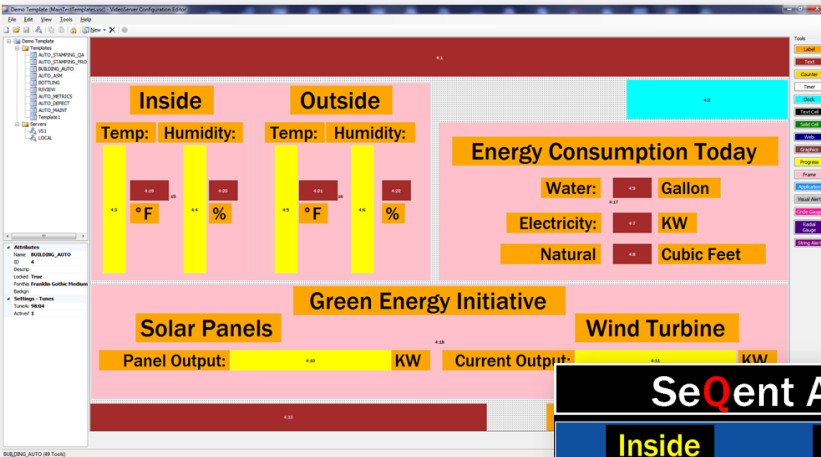


Actual Display Rendering

Target	Plan	Line1 Team2			Actual	Delta
79	76	Blocked			69	6
Previous					Next	1
5						
OEE%	Qual%	Avail%	Effic%	MTBF	MTTR	JPH
99	98	98	99	76	93	75
Defects%	Stops	Stop Time	Top Defects			
1	0	03:34	DS Rear Tailgate MIS-ALIGN			
Shift 3			AUTO MFG			Tue
3:53 PM						06/01/2020

Automotive Facility – Sample Facility Display

Configuration Editor Design



Actual Display Rendering

SeQent Andon - Building Automation																					
<table border="1"> <thead> <tr> <th>Inside</th> <th>Outside</th> </tr> <tr> <th>Temp:</th> <th>Humidity:</th> </tr> </thead> <tbody> <tr> <td>70.6 °F</td> <td>42 %</td> </tr> <tr> <td>62.7 °F</td> <td>48 %</td> </tr> </tbody> </table>				Inside	Outside	Temp:	Humidity:	70.6 °F	42 %	62.7 °F	48 %	<table border="1"> <thead> <tr> <th colspan="2">Energy Consumption Today</th> </tr> </thead> <tbody> <tr> <td>Water:</td> <td>23 Gallons</td> </tr> <tr> <td>Electricity:</td> <td>31 KW</td> </tr> <tr> <td>Natural Gas:</td> <td>17 Cubic Feet</td> </tr> </tbody> </table>		Energy Consumption Today		Water:	23 Gallons	Electricity:	31 KW	Natural Gas:	17 Cubic Feet
Inside	Outside																				
Temp:	Humidity:																				
70.6 °F	42 %																				
62.7 °F	48 %																				
Energy Consumption Today																					
Water:	23 Gallons																				
Electricity:	31 KW																				
Natural Gas:	17 Cubic Feet																				
<table border="1"> <thead> <tr> <th colspan="2">Green Energy Initiative</th> </tr> </thead> <tbody> <tr> <td>Solar Panels</td> <td>Wind Turbine</td> </tr> <tr> <td>Panel Output: 34 KW</td> <td>Current Output: 74 KW</td> </tr> <tr> <td></td> <td>Speed: 37 RPM</td> </tr> </tbody> </table>						Green Energy Initiative		Solar Panels	Wind Turbine	Panel Output: 34 KW	Current Output: 74 KW		Speed: 37 RPM								
Green Energy Initiative																					
Solar Panels	Wind Turbine																				
Panel Output: 34 KW	Current Output: 74 KW																				
	Speed: 37 RPM																				
Providing Your Automation a Voice				Keeware OPC																	



WHAT CAN SEQENT DO FOR YOU?

INCREASE PRODUCTIVITY

Improve Human Capital Efficiency

Optimize Asset Utilization

Reduce Asset Downtime

INCREASE QUALITY

Automated Notification of Defects

Notification of Out of Tolerance Conditions

Increase First Time Completion

INCREASE PROFITABILITY

Reduce Material Waste/ Scrap

Reduce Energy Consumption

Reduce Human Capital Requirements

CONTACT



4500 Blakie Rd, Suite 137
London, Ontario N6L 1G5
Canada



[+1.519.652.0401](tel:+15196520401)



Sales@SeQent.com



www.SeQent.com

CONNECT WITH US



V4.0

©2020 SeQent Ltd.